



Unlock light commercial Monitoring and Verification on Niagara.



Monitor & Verify

Monitor occupancy, air quality, airflow and more against standards including ASHRAE 62.1, OSHA, CDC, and more.



Grow New Business

Expand your existing service plans with M&V reports and grow recurring revenues through monitoring services.



Painless Install

Install in minutes with Hawken sensors and auto dashboards, then view your portfolio from the cloud without rolling a truck.

Client Trusted.



We have hundreds of buildings at CPS, so flexibility and ease of install are critical. HawkenAQ works perfectly across our portfolio, and it was [easier to install than I could have imagined](#). Their product has given our staff and students peace of mind going back to school amidst difficult times.



Paul Valente
Facility Automation Architect



Save hours on every job.

Retrofit any building in less than an hour with a complete M&V solution for Niagara.

How it works.

VYKON
by TRIDIUM

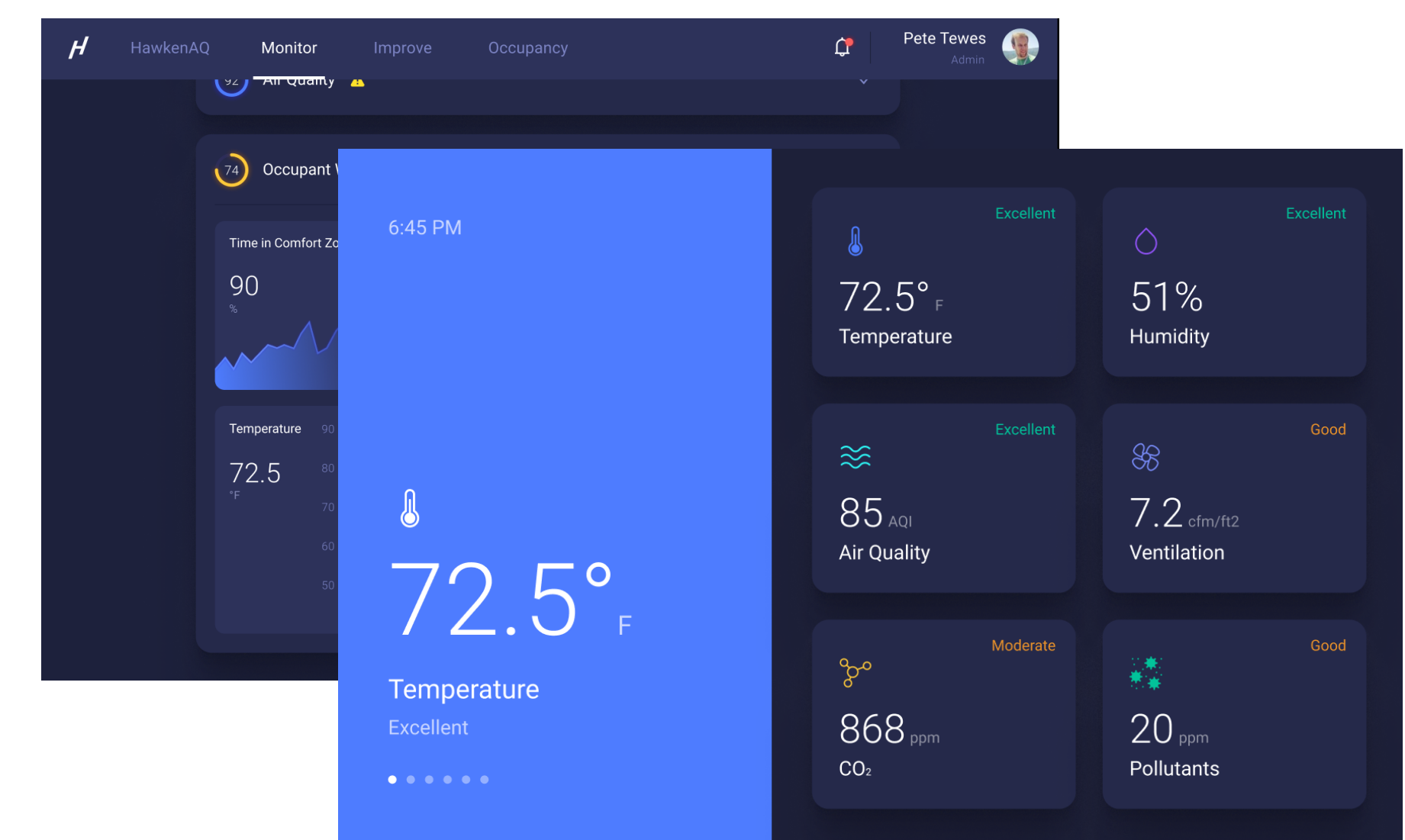


Setup Edge 10 with
preconfigured stations.

HawkenAQ

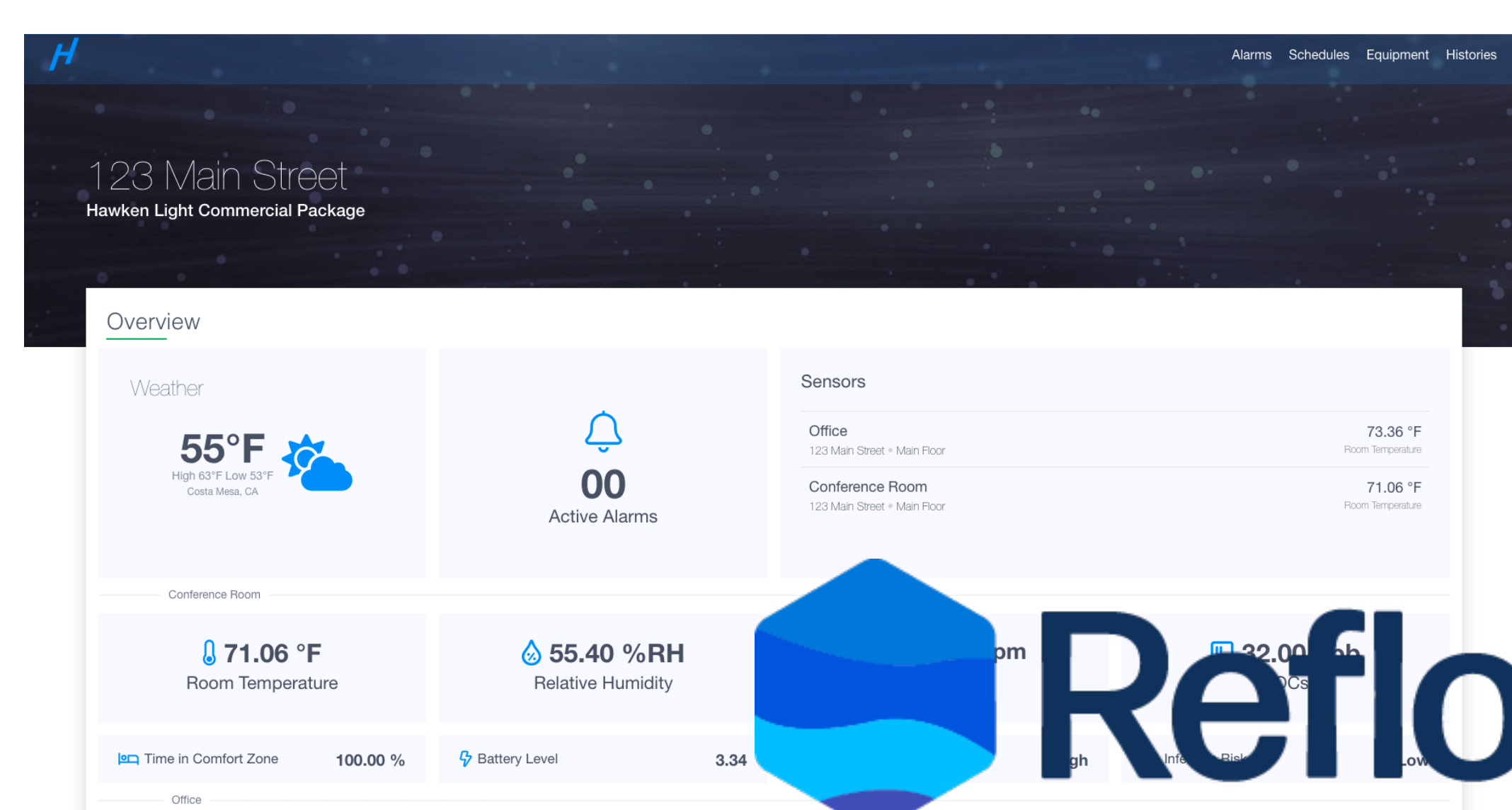


Install and activate
Hawken sensors.



Dashboards and reports
are created automatically.

Reflow dashboards
created automatically.



Reflow

Optimize building performance and
detect faults with Resolute FDD.

single core data operations

RESOLUTE
BUILDING INTELLIGENCE

Equipment & (Phase) Status

Equipment & (Phase)	Status	Temp	Humidity	CO2	VOCs	PM2.5	PM10	Leak	Smoke	Fire	Water	Gas	Other
1. North Zone 1 (HVAC Unit 1)	On	72.5°F	51%	85 ppm	7.2 ppb	20 ppb	20 ppb	0	0	0	0	0	0
2. North Zone 2 (HVAC Unit 2)	On	72.5°F	51%	85 ppm	7.2 ppb	20 ppb	20 ppb	0	0	0	0	0	0
3. North Zone 3 (HVAC Unit 3)	On	72.5°F	51%	85 ppm	7.2 ppb	20 ppb	20 ppb	0	0	0	0	0	0
4. North Zone 4 (HVAC Unit 4)	On	72.5°F	51%	85 ppm	7.2 ppb	20 ppb	20 ppb	0	0	0	0	0	0
5. North Zone 5 (HVAC Unit 5)	On	72.5°F	51%	85 ppm	7.2 ppb	20 ppb	20 ppb	0	0	0	0	0	0
6. North Zone 6 (HVAC Unit 6)	On	72.5°F	51%	85 ppm	7.2 ppb	20 ppb	20 ppb	0	0	0	0	0	0
7. North Zone 7 (HVAC Unit 7)	On	72.5°F	51%	85 ppm	7.2 ppb	20 ppb	20 ppb	0	0	0	0	0	0
8. North Zone 8 (HVAC Unit 8)	On	72.5°F	51%	85 ppm	7.2 ppb	20 ppb	20 ppb	0	0	0	0	0	0
9. North Zone 9 (HVAC Unit 9)	On	72.5°F	51%	85 ppm	7.2 ppb	20 ppb	20 ppb	0	0	0	0	0	0
10. North Zone 10 (HVAC Unit 10)	On	72.5°F	51%	85 ppm	7.2 ppb	20 ppb	20 ppb	0	0	0	0	0	0
11. North Zone 11 (HVAC Unit 11)	On	72.5°F	51%	85 ppm	7.2 ppb	20 ppb	20 ppb	0	0	0	0	0	0
12. North Zone 12 (HVAC Unit 12)	On	72.5°F	51%	85 ppm	7.2 ppb	20 ppb	20 ppb	0	0	0	0	0	0
13. North Zone 13 (HVAC Unit 13)	On	72.5°F	51%	85 ppm	7.2 ppb	20 ppb	20 ppb	0	0	0	0	0	0
14. North Zone 14 (HVAC Unit 14)	On	72.5°F	51%	85 ppm	7.2 ppb	20 ppb	20 ppb	0	0	0	0	0	0
15. North Zone 15 (HVAC Unit 15)	On	72.5°F	51%	85 ppm	7.2 ppb	20 ppb	20 ppb	0	0	0	0	0	0

single core data operations

RESOLUTE
BUILDING INTELLIGENCE

Equipment & (Phase) Status

Equipment & (Phase)	Status	Temp	Humidity	CO2	VOCs	PM2.5	PM10	Leak	Smoke	Fire	Water	Gas	Other
1. North Zone 1 (HVAC Unit 1)	On	72.5°F	51%	85 ppm	7.2 ppb	20 ppb	20 ppb	0	0	0	0	0	0
2. North Zone 2 (HVAC Unit 2)	On	72.5°F	51%	85 ppm	7.2 ppb	20 ppb	20 ppb	0	0	0	0	0	0
3. North Zone 3 (HVAC Unit 3)	On	72.5°F	51%	85 ppm	7.2 ppb	20 ppb	20 ppb	0	0	0	0	0	0
4. North Zone 4 (HVAC Unit 4)	On	72.5°F	51%	85 ppm	7.2 ppb	20 ppb	20 ppb	0	0	0	0	0	0
5. North Zone 5 (HVAC Unit 5)	On	72.5°F	51%	85 ppm	7.2 ppb	20 ppb	20 ppb	0	0	0	0	0	0
6. North Zone 6 (HVAC Unit 6)	On	72.5°F	51%	85 ppm	7.2 ppb	20 ppb	20 ppb	0	0	0	0	0	0
7. North Zone 7 (HVAC Unit 7)	On	72.5°F	51%	85 ppm	7.2 ppb	20 ppb	20 ppb	0	0	0	0	0	0
8. North Zone 8 (HVAC Unit 8)	On	72.5°F	51%	85 ppm	7.2 ppb	20 ppb	20 ppb	0	0	0	0	0	0
9. North Zone 9 (HVAC Unit 9)	On	72.5°F	51%	85 ppm	7.2 ppb	20 ppb	20 ppb	0	0	0	0	0	0
10. North Zone 10 (HVAC Unit 10)	On	72.5°F	51%	85 ppm	7.2 ppb	20 ppb	20 ppb	0	0	0	0	0	0
11. North Zone 11 (HVAC Unit 11)	On	72.5°F	51%	85 ppm	7.2 ppb	20 ppb	20 ppb	0	0	0	0	0	0
12. North Zone 12 (HVAC Unit 12)	On	72.5°F	51%	85 ppm	7.2 ppb	20 ppb	20 ppb	0	0	0	0	0	0
13. North Zone 13 (HVAC Unit 13)	On	72.5°F	51%	85 ppm	7.2 ppb	20 ppb	20 ppb	0	0	0	0	0	0
14. North Zone 14 (HVAC Unit 14)	On	72.5°F	51%	85 ppm	7.2 ppb	20 ppb	20 ppb	0	0	0	0	0	0
15. North Zone 15 (HVAC Unit 15)	On	72.5°F	51%	85 ppm	7.2 ppb	20 ppb	20 ppb	0	0	0	0	0	0

single core data operations

RESOLUTE
BUILDING INTELLIGENCE

Equipment & (Phase) Status

Equipment & (Phase)	Status	Temp	Humidity	CO2	VOCs	PM2.5	PM10	Leak	Smoke	Fire	Water	Gas	Other
1. North Zone 1 (HVAC Unit 1)	On	72.5°F	51%	85 ppm	7.2 ppb	20 ppb	20 ppb	0	0	0	0	0	0
2. North Zone 2 (HVAC Unit 2)	On	72.5°F	51%	85 ppm	7.2 ppb	20 ppb	20 ppb	0	0	0	0	0	0
3. North Zone 3 (HVAC Unit 3)	On	72.5°F	51%	85 ppm	7.2 ppb	20 ppb	20 ppb	0	0	0	0	0	0
4. North Zone 4 (HVAC Unit 4)	On	72.5°F	51%	85 ppm	7.2 ppb	20 ppb	20 ppb	0	0	0	0	0	0
5. North Zone 5 (HVAC Unit 5)	On	72.5°F	51%	85 ppm	7.2 ppb	20 ppb	20 ppb	0	0	0	0	0	0
6. North Zone 6 (HVAC Unit 6)	On	72.5°F	51%	85 ppm	7.2 ppb	20 ppb	20 ppb	0	0	0	0	0	0
7. North Zone 7 (HVAC Unit 7)	On	72.5°F	51%	85 ppm	7.2 ppb	20 ppb	20 ppb	0	0	0	0	0	0
8. North Zone 8 (HVAC Unit 8)	On	72.5°F	51%	85 ppm	7.2 ppb	20 ppb	20 ppb	0	0	0	0	0	0
9. North Zone 9 (HVAC Unit 9)	On	72.5°F	51%	85 ppm	7.2 ppb	20 ppb	20 ppb	0	0	0	0	0	0
10. North Zone 10 (HVAC Unit 10)	On	72.5°F	51%	85 ppm	7.2 ppb	20 ppb	20 ppb	0	0	0	0	0	0
11. North Zone 11 (HVAC Unit 11)	On	72.5°F	51%	85 ppm	7.2 ppb	20 ppb	20 ppb	0	0	0	0	0	0
12. North Zone 12 (HVAC Unit 12)	On	72.5°F	51%	85 ppm	7.2 ppb	20 ppb	20 ppb	0	0	0	0	0	0
13. North Zone 13 (HVAC Unit 13)	On	72.5°F	51%	85 ppm	7.2 ppb	20 ppb	20 ppb	0	0	0	0	0	0
14. North Zone 14 (HVAC Unit 14)	On	72.5°F	51%	85 ppm	7.2 ppb	20 ppb	20 ppb	0	0	0	0	0	0
15. North Zone 15 (HVAC Unit 15)	On	72.5°F	51%	85 ppm	7.2 ppb	20 ppb	20 ppb	0	0	0	0	0	0

RESOLUTE
BUILDING INTELLIGENCE

Sensors for every use case.

- Space Temp/Hum & Occupancy
- Duct Temperature
- CO2, VOCs & PM2.5
- Virus & Mold Risk
- Vaping & Smoking
- Leak detection
- Modbus, I/O, and more...

Set and forget install.

- Automatic sensor calibration
- Dashboards created automatically
- Zero discovery configuration
- Over 20k sqft per Hub
- 5+ year battery life
- Wired options available